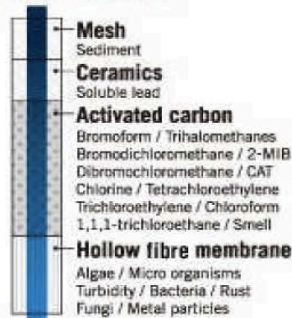




CSPXE
Cartridge No. HGC9E-S

Filter System

SUPER HIGH GRADE

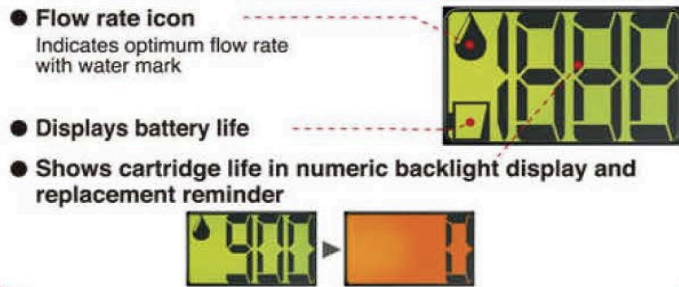


Tasty & clean water

Filtration Performance :
900 Litre per cartridge or 1 year.

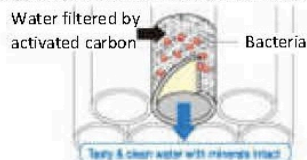
Size : 124 mm x 129 mm x 74 mm
Weight : 0.33 kg. (0.46 kg. with water)

LCD DISPLAY

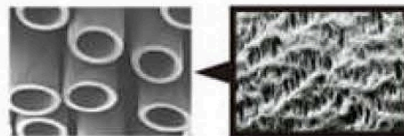


Hollow Fibre Membrane.

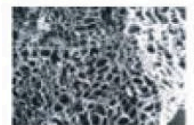
The core competence of CLEANSUI, hollow fibre membrane filter made of ultra-fine polyethylene. The sidewalls can remove the minute particles as 0.1 micrometer in tap water and bacteria, algae, fungi, micro-organisms, cysts, cryptosporidium, metal particles such as rust, lead and etc.



Movement of water through the hollow fibre membrane filter.



Enlarge view, cross section of hollow fibre membrane. Enlarge view, sidewall of hollow fibre membrane.



Activated carbon

Activated carbon reduce unpleasant odors, chlorine and mold (2-MIB). It also successfully remove pesticides, herbicides, CAT, Volatile Organic Compounds (VOCs) such as total trihalomethanes (chloroform, bromodichloromethane, dibromochloromrthane, bromoform), tetrachloroethylene, trichloroethylene, 1,1,1-trichloroethane etc.

Ceramics

The special ceramics remove soluble lead, apart from other contaminants (Insoluble lead can be removed by hollow fibre membrane filter.)

