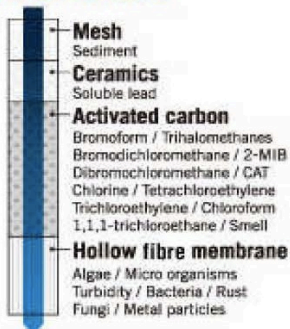


## Filter System

SUPER  
HIGH GRADE

Tasty &amp; clean water

Z9

Cartridge No. UZC2000E



Filtration Performance :

15,000 Litre per cartridge or 1 year.

Size : 156 mm x 121 mm x 263 mm

Weight : 1.40 kg. ( 2.00 kg. with water )

- **Flexible nozzle** ; easily adjustable height and direction of water flow.
- **High-flux, flow rate 3 litres per minute.**
- **User friendly 3-choices lever** ; filter water for drinking & unfiltered for using ( save the cartridge life )



Streaming tap water.



Shower tap water.



Filtered water.

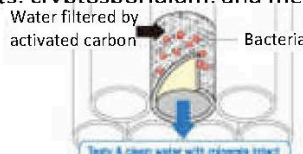
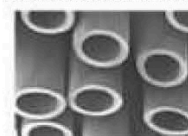
1. **Nonwoven Fabric:** Pre-filter for the large dirtiness.

**2.1. Ceramic:** The special ceramic filter removes soluble lead, apart from other contaminants. (Insoluble lead is removed by the hollow fibre membrane filter).

**2.2. Anti-bacterial activated carbon:** The activated carbon filter reduces unpleasant odors, chlorine and mould (2-MIB) from your drinking water. It also successfully removes pesticides, herbicides, CAT, Volatile Organic Compounds (VOCs) such as total trihalomethanes (chloroform, bromodichloromethane, dibromochloromethane, bromoform), tetrachloroethylene, trichloroethylene, 1,1,1-trichloroethane, etc.



**3. Hollow fibre membrane:** The core competency of Cleansui- the hollow fibre membrane filter- is made of ultra-fine polyethylene. The sidewalls can remove minute particles (as small as 0.1 micrometer) from tap water- including bacteria, algae, fungi, micro-organisms, cysts, cryptosporidium, and metal particles such as rust, lead etc.

Tasty & clean water with minerals intact  
Movement of water through the hollow fibre membrane filter.

Enlarge view, cross section of hollow fibre membrane.



Enlarge view, sidewall of hollow fibre membrane.

